



# Emx1 Polyclonal Antibody

<b>Catalog No</b>	YP-Ab-15755
<b>Isotype</b>	IgG
<b>Reactivity</b>	Human;Mouse;Rat
<b>Applications</b>	WB;ELISA
<b>Gene Name</b>	EMX1
<b>Protein Name</b>	Homeobox protein EMX1
<b>Immunogen</b>	The antiserum was produced against synthesized peptide derived from human EMX1. AA range:181-230
<b>Specificity</b>	Emx1 Polyclonal Antibody detects endogenous levels of Emx1 protein.
<b>Formulation</b>	Liquid in PBS containing 50% glycerol, 0.5% BSA and 0.02% sodium azide.
<b>Source</b>	Polyclonal, Rabbit,IgG
<b>Purification</b>	The antibody was affinity-purified from rabbit antiserum by affinity-chromatography using epitope-specific immunogen.
<b>Dilution</b>	Western Blot: 1/500 - 1/2000. ELISA: 1/40000. Not yet tested in other applications.
<b>Concentration</b>	1 mg/ml
<b>Purity</b>	≥90%
<b>Storage Stability</b>	-20°C/1 year
<b>Synonyms</b>	EMX1; Homeobox protein EMX1; Empty spiracles homolog 1; Empty spiracles-like protein 1
<b>Observed Band</b>	28kD
<b>Cell Pathway</b>	Nucleus . Cytoplasm . Might be shuttling between the nucleus and the cytoplasm.
<b>Tissue Specificity</b>	Cerebral cortex.
<b>Function</b>	function:Transcription factor, which in cooperation with EMX2, acts to generate the boundary between the roof and archipallium in the developing brain. May function in combinations with OTX1/2 to specify cell fates in the developing central nervous system.,similarity:Belongs to the EMX homeobox family.,similarity:Contains 1 homeobox DNA-binding domain.,tissue specificity:Cerebral cortex.,
<b>Background</b>	function:Transcription factor, which in cooperation with EMX2, acts to generate the boundary between the roof and archipallium in the developing brain. May function in combinations with OTX1/2 to specify cell fates in the developing central nervous system.,similarity:Belongs to the EMX homeobox family.,similarity:Contains 1 homeobox DNA-binding domain.,tissue specificity:Cerebral cortex.,

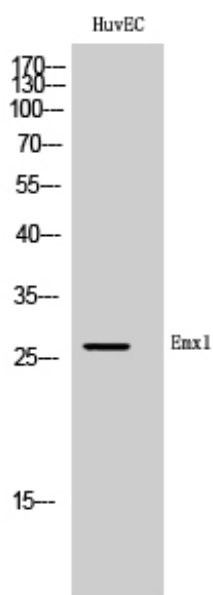
**matters needing attention**

Avoid repeated freezing and thawing!

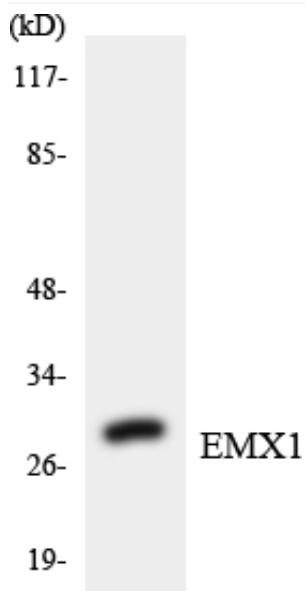
**Usage suggestions**

This product can be used in immunological reaction related experiments. For more information, please consult technical personnel.

## Products Images



Western Blot analysis of HuvEC cells using Emx1 Polyclonal Antibody cells nucleus extracted by Minute TM Cytoplasmic and Nuclear Fractionation kit (SC-003, Invent biotech, MN, USA).



Western blot analysis of the lysates from Jurkat cells using EMX1 antibody.